

Impact Report

2025-26



Jewish Federation
of Northern New Jersey

As One
COMMUNITY

MEETING
THE MOMENT

Shaping the Future

2025 - 2026

Federation is meeting this moment with

URGENCY, COMPASSION, AND PURPOSE

by responding to evolving needs while

strengthening the foundation of our community.

At the same time, our investment ensures that the

next generation deepens connections and builds

resilience to ensure a secure and unified Jewish

community for years to come.

Dear Friends,

We are proud to present this year's Impact Report – a reflection of a year marked by both profound challenges and inspiring strength.

Over the past year, we have remained focused on a set of clear strategic priorities: deepening engagement, strengthening unity, enhancing community safety and security, and raising the resources needed to meet the growing needs of our community. Throughout this report, you will see the results of that focus: intentional investments, thoughtful allocation of resources, and the incredible reach and impact of our work.

This year carried deep emotion for our community.

We witnessed the long-awaited release of the hostages and warmly welcomed Edan Alexander home – an extraordinary moment that reminded us of the power of unity and hope. At the same time, the ongoing tension and trauma in Israel continue, and we have seen remarkable resilience alongside a growing mental health crisis.

Here at home, rising antisemitism remains a serious concern. In response, we have strengthened our commitment to community security through expanded training, facilitating access to government grants for target hardening, building strong relationships with law enforcement, and working with national security partners to ensure preparedness and prevention.

This year, we launched Jews for NJ – an initiative rooted in unity – bringing our community together with renewed energy and connection, including a newly launched podcast that amplifies diverse voices.

We invite you to explore this report and see the impact of what we have accomplished together. Even in difficult times, we move forward with hope and confidence in a stronger future. We know that none of this would be possible without your support and trust.

Thank you,



Jason M. Shames
President and
Chief Executive Officer



Daniel C. Herz
Chair, Board of Trustees



Jason M. Shames & Daniel C. Herz

Strategic Priorities:

Our work is guided by four strategic priorities that reflect both immediate needs and a long-term vision of our community. We engage the next generation, support Israel and global Jewry, safeguard our community through a strong and coordinated commitment to safety and security, and sustain the resources that power our impact.

We are meeting today's challenges while shaping our Jewish future.

AND – IT'S BECAUSE OF YOU!



Engage the Next Generation



Stand with Israel



Protect and Prepare



Care for Those in Need





Engage the Next Generation

We invest in organizations and initiatives that create meaningful opportunities and foster growth and connection. From early childhood through young adulthood, from preschool and camping experiences to Israel travel, social engagement, and volunteer opportunities, we create experiences that build lasting connections.



\$125,000

One Happy Camper Grants



JEWISH FUTURE



\$715,000

**Teen/Young Adult
Programming**



Stand with Israel

We actively strengthen our connection to Israel, with a special focus on our sister city, Nahariya, through strategic partnerships and direct support. We invest in community programs and address growing mental health needs, deepen relationships, build resilience, and ensure a vibrant future for Nahariya and our shared global community.



AM YISRAEL CHAI!



\$484,000
Trauma Support





Protect & Prepare

Ensuring the safety of our community is fundamental to everything Federation does. We actively combat rising antisemitism by strengthening security across our institutions and investing in preparedness at every level. Through threat assessments, comprehensive training, and strategic partnerships, we equip organizations with the tools and support they need to prevent, respond to, and recover from threats. We are building a community that is prepared, protected, and resilient.



\$445,000
Securing Our Community



40+ Trainings
1,000+
Community Members



Active Shooter Training
Situational Awareness
Stop the Bleed
Anti-bias Training



Care for Those in Need

We care for those in need by funding essential services that support dignity, stability, and well-being. Through partnerships and targeted investments, we address food insecurity, mental health support, and other critical needs. Our work ensures that vulnerable individuals and families receive the support they need to build meaningful, fulfilling lives.





\$ 1.1M+
Senior Nutrition



65,000
Meals Served



Lasher Family Nahariya Partnership

This year, Cheryl and Lee Lasher made a transformational endowment gift in support of Nahariya, Federation's sister city, by establishing the Lasher Family Nahariya Partnership. Their generosity ensures sustained, long-term investment in the city and its residents, providing critical resources where they are needed most while strengthening the enduring connection between our communities. This gift also underscores the power of endowment, creating a lasting foundation that provides stability, flexibility, and impact for generations to come.





LASHER FAMILY

Nahariya

PARTNERSHIP

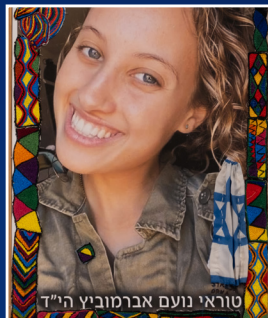
“Supporting Nahariya is deeply personal to our family, it is about standing together, investing in people and building a stronger future together. We may be a small nation but we are the largest family and it is a privilege for us to partner with our Nahariya family.”

Cheryl and Lee Lasher

Jewish Federation of Northern New Jersey

HEROINES OF OCTOBER 7

Art Exhibit



Heroines of October 7 is a powerful exhibit honoring the thousands of female soldiers, police officers, and civilians who demonstrated extraordinary courage and bravery on October 7. Jewish Federation was honored to bring this moving tribute to New Jersey, paying homage to more than 48 women - including some who made the ultimate sacrifice - whose courage, resilience, and service exemplify unwavering dedication in the face of unimaginable circumstances.



JEWES FOR NJ



Jews for NJ was created to bring more “Jewish” into people’s lives in a way that feels accessible, relevant, and meaningful.

Its purpose is to meet people where they are, offering easy entry points to engage with Jewish identity and community without expectation or barrier. The goal is to strengthen a shared sense of belonging by helping individuals see themselves as part of a connected Jewish community.

UNITY. COMMUNITY. PRIDE.

EVENTS

BAKE



JUMP



FUN





JEWES FOR NJ PODCAST

The Jews for NJ podcast brings the conversation to life! It's engaging, approachable, and easy to tune into. Through candid, thoughtful, and sometimes unexpected conversations, it explores the people, stories, and moments shaping Jewish life today.



HOSTED BY DANIEL HERZ

GUESTS





MAJOR GIFTS DINNER



FEDERATION FULL HOUSE



LION OF JUDAH LUNCHEON



MITZVAH DAY



ANNUAL MEETING

A YEAR IN PICTURES



MAJOR GIFTS DINNER



BOARD MISSION TO ISRAEL



WOMEN'S MISSION TO EUROPE



SPRING LUNCHEON
RACHEL GOLDBERG-POLIN



MARCH MEGA FOOD DRIVE



MAJOR GIFTS DINNER – DAN SENOR



PLAY FOR FEDERATION



KING DAVID SOCIETY



FEDERATION FULL HOUSE



WOMEN'S SPRING LUNCHEON



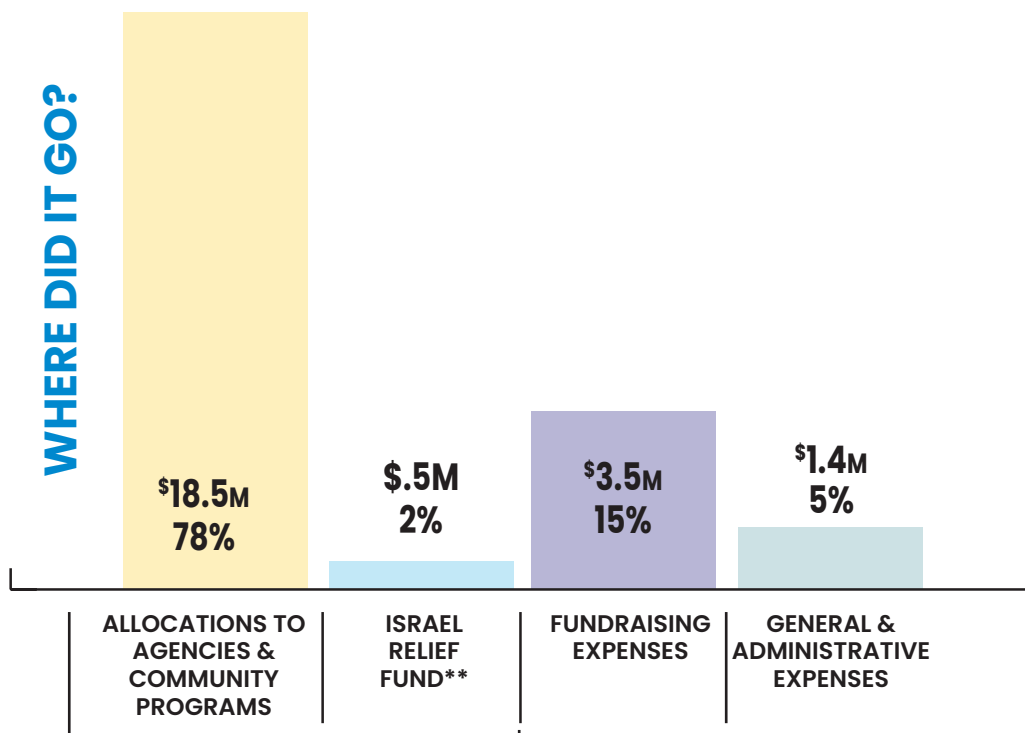
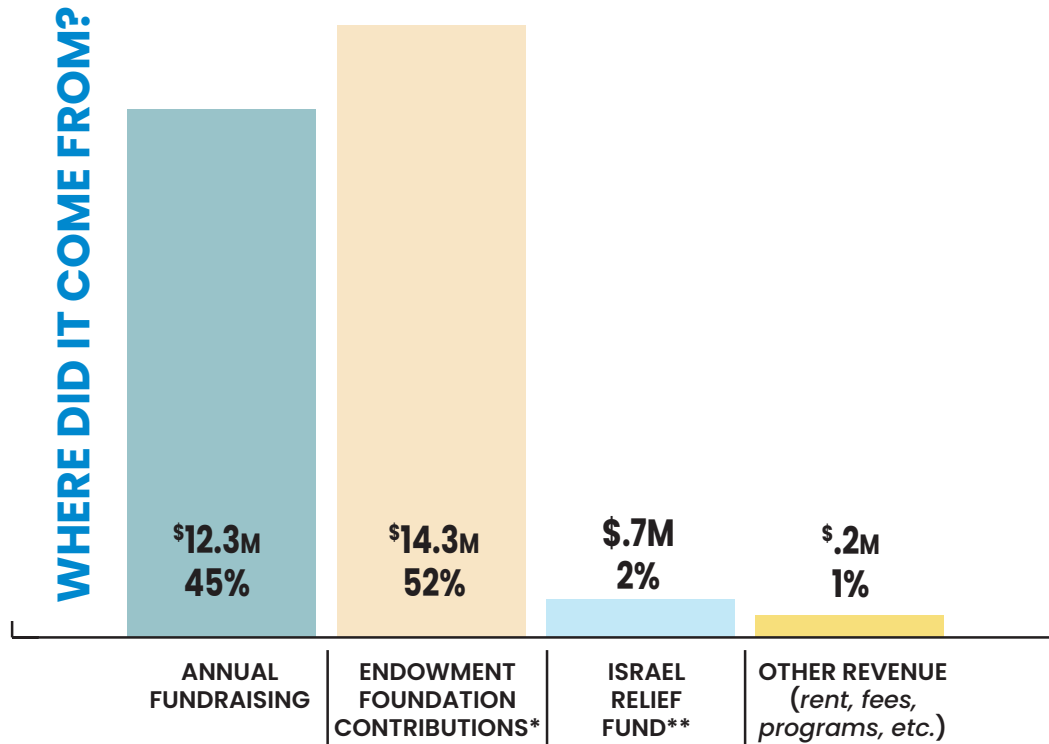
VISIONARY VOICES – GLENN COHEN



FEDERATION FULL HOUSE

FY 2024-25 FINANCIAL SNAPSHOT

\$27.5 MILLION RAISED



NOTES: Derived from Jewish Federation of Northern New Jersey’s audited financial statements, fiscal year ending June 30, 2025. **Does not include unrealized investment gains or changes in net assets.** According to Charity Watch, a “highly efficient” charity produces a program percentage of 75% or greater (www.charitywatch.org).

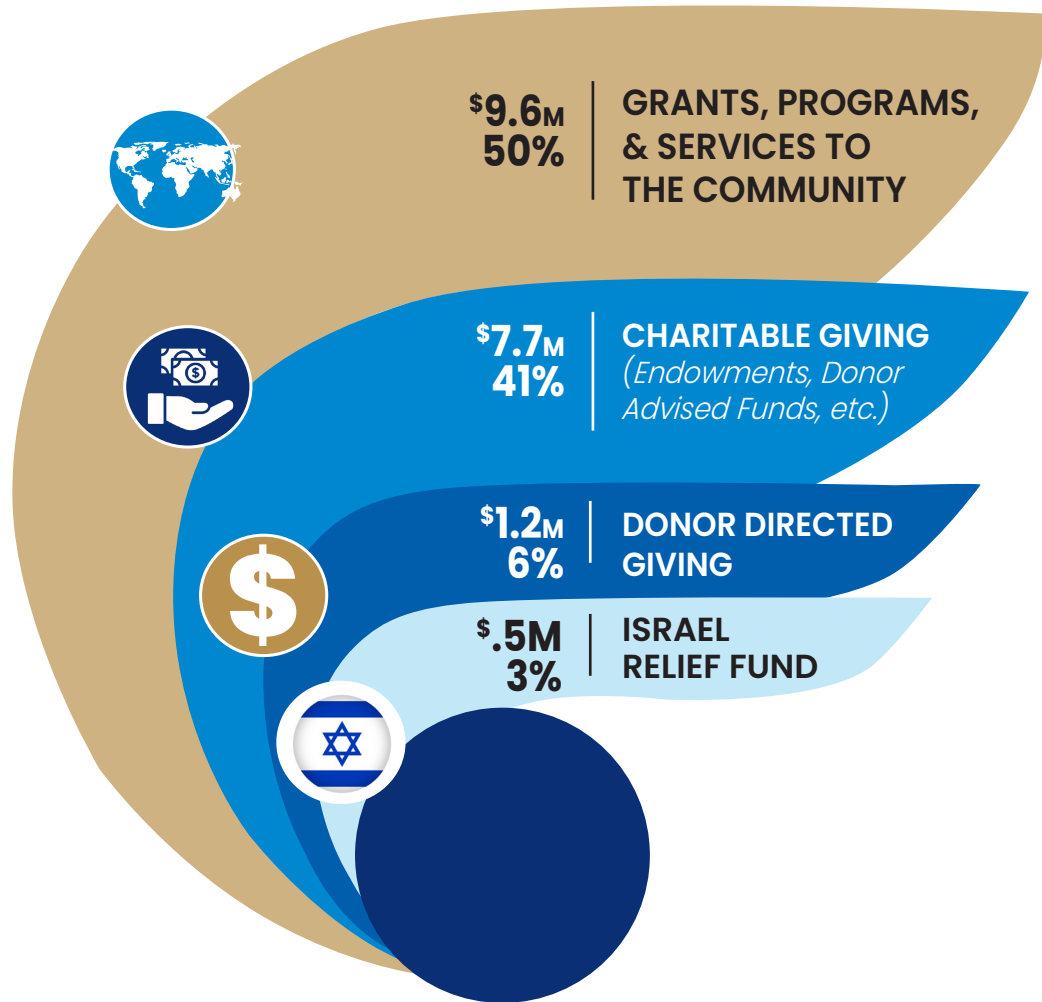
Our budgeting process is based on the calendar year community campaign, but the audited financials are based on the fiscal year (ending June 30). This timing nuance contributes to any variances between revenue and expenses.

* Endowment funds represent contributions to Federation’s permanent endowment and donor advised funds.

** Funds remain available to support emergent needs in Israel.

BREAKDOWN OF ALLOCATIONS TO AGENCIES & COMMUNITY PROGRAMS

\$19 MILLION DISTRIBUTED



GRANTS, PROGRAMS, & SERVICES TO THE COMMUNITY

Federation distributes operating and programming grants locally and in Israel. Targeted program grants are directed to seven areas of impact:

- Hunger Relief
- Building Jewish Identity in our Youth
- At-Risk Youth and ongoing needs in Israel
- Jewish Engagement for Special Needs
- Jewish Day Schools
- Mental Health Support for Young People
- Special Programs

Federation provides programs and services for the community including:

- Community Security
- Jewish Community Relations
- Center for Israel Engagement
- Civic & Community Engagement
- Volunteer Center
- Synagogue Leadership Initiative
- Center for Teen Engagement
- Jewish Community Outreach in Hudson County & Wayne

CHARITABLE GIVING *(Endowments, Donor Advised Funds, etc.)*

Donations to Federation or other eligible non-profits made through endowments or donor advised funds at Federation.

DONOR DIRECTED GIVING

Designated donations made through Federation to other agencies aligned with Federation's mission.

ISRAEL RELIEF FUND

Donations to the Israel Relief Fund provided mental health and trauma support, economic revitalization, educational resources, and emergency response supplies.

OUR COMMUNITY

LOCAL PARTNER AGENCIES

BBYO/BBYO International
Beit Midrash Teaneck
Ben Porat Yosef
Birthright Israel
Camp Veritans
COJECO (Russian Speaking Outreach/Teen Program)
The Frisch School
Hebrew Free Loan Society of New Jersey
Hillel International
Jewish Association for Developmental Disabilities (J-ADD)
JCC of Northern New Jersey
Jewish Community Center Association (JCCA)
Jewish Family and Children's Services of Northern New Jersey
Jewish Federations of New Jersey
Jewish Federations of North America
Jewish Home Family
Jewish Student Union Clubs
Kaplan JCC on the Palisades
Ma'ayanot Yeshivah High School for Girls
Moishe Houses (Men Global)

The Moriah School
Naaleh High School for Girls
Network of Jewish Human Service Agencies
Nevut
OpenDor Media
Rosenbaum Yeshiva of North Jersey
Rutgers Hillel
SINAI Schools
Solomon Schechter Day School of Bergen County
Teach NJ Advocacy Initiative
Kol Dorot (Individual Learning)
Temple Emanuel of Pascack Valley (CHAI Program)
Torah Academy of Bergen County
Tzofim (Tenafly & Fair Lawn)
United Synagogue of Hoboken (PJ Library, Special Needs Program)
Yachad
Yavneh Academy
Yeshivat He'Atid
Yeshivat Noam

OVERSEAS PARTNER AGENCIES

Amcha - Holocaust Survivor Rehab
Bayit Cham for Boys & Girls
Eli Association
Ghetto Fighters' House Museum
HaGal Sheli
Healthy Minds/ Israel Friends
Israel Trauma Coalition
Jewish Agency For Israel (JAFI)
Joint Distribution Committee (JDC)
Koby Mandell Foundation

LEKET Israel - The National Food Bank
Michael Levin Lone Soldier Center
Nahariya
Natan
Nirim (At-Risk Youth)
The Relief Center (Nahariya)
The Society for Protection of Nature in Israel (SPNI)
Tikvah Children's Home
Western Galilee Hospital

COMMUNITY PROGRAMS

Chaplaincy - Bergen County
Center for Israel Engagement
Center for Teen Engagement
ElevatED Early Childhood Education (ECE)
Hillel Campus Manager: Ramapo College, Stevens Institute of Technology
Hudson County Outreach and Engagement
LEAP High School Jewish Leadership Program
IsraelNOW 8th Grade Trip to Israel

Jewish Community Relations Committee (JCRC)
Jewish Community Security Department
Jewish Right Start (Preschool Incentive Grants)
One Happy Camper
Onward Israel
Lasher Family Nahariya Partnership
Synagogue Leadership Initiative
Tepper Security Funding for ECE (via JFNA)
Volunteer Center
Wayne Jewish Programming

BOARD & LEADERSHIP

Daniel Herz

Chair, Board of Trustees

Andrew Kent

Vice Chair, Board of Trustees

Chair, Financial Resource

Development

Jeffrey Tucker

Treasurer, Board of Trustees

Chair, Finance Committee

Marcy Cohen

Secretary, Board of Trustees

Stephanie Cohn

Chair, Planning & Allocations

Joan Krieger

Chair, Audit Committee

Rena Donin Schlussel

Chair, Jewish Community

Relations Committee

Laurence Schreiber

Chair, Investment Committee

Daniel M. Shlufman

Immediate Past President

Chair, Endowment Fund

Jason M. Shames

President &

Chief Executive Officer

Board of Trustees

Roberta Abrams*

Dina Bassen

Bruce Brafman

Paul Brensilber

Lauren Cherkas

Robin Epstein

Shira Feuerstein

Merle Fish

Casey Halper

Andrew Jacobs

David Kahan

Marni Kriegel, MD

Lee Lasher*

Miriam Lipsky

Zvi Marans, MD*

Daniel Miller

Susan Penn

Jayne Petak*

Lois Roman

Ron Rosensweig*

Evan Schwarz

Seth Shulman

Larry Silverman

Steve Silverstein

Leslie Smith

Andrea Weinberger

Fran Weingast

Donna Weintraub

Tracy Zur

***Past President**

Jason M. Shames, *President and Chief Executive Officer*

Andrew Epstein, *Chief Financial Officer*

Amy Glazer, *Chief Advancement Officer*

Naomi S. Knopf, *Chief Impact Officer*

Laura Freeman, *Managing Director, Marketing and Communications*

Robin Rochlin, *Managing Director, Endowment Foundation, Assistant Executive Vice President*

כולנו ביחד!

All of us together!



Jewish Federation
of Northern New Jersey

As One
COMMUNITY

jfnnj.org

50 Eisenhower Drive
Paramus, New Jersey
201.820.3900



@jfnnj

DONATE TODAY!

