



Jewish Federation

Response in Israel

Our Impact Since October 7

Impact Report | Issued January 2024



Jewish Federation
of Northern New Jersey

The Unthinkable

On October 7, Jewish communities around the world awoke with horror and disbelief as we learned that terrorists from Gaza had infiltrated Israel. More than 1,200 lost their lives, 240 people were abducted and taken hostage, and nearly 2,000 were brutally attacked.

From grief and anger emerged a shared determination to ensure our brothers and sisters in Israel could feel our unwavering support as they begin to navigate the challenging months ahead.

Our Approach

Jewish Federation of Northern New Jersey is part of a national system of Federations called Jewish Federations of North America (JFNA). Thanks to JFNA's powerful network of partners around the world, dollars are distributed to where they are needed most. Immediately after October 7, we launched our efforts in full force, assessing needs, coordinating in real time with Israeli partners, the Israeli government, and Nahariya, our sister city. We raised \$3M and immediately began making a significant impact.

Our funding targets five pillars that address the immediate needs of our brothers and sisters in Israel today. As the war continues, we will also continue to raise money and turn our collective attention toward rebuilding communities and restoring Israel's national resilience.

Israel Emergency Fund

\$3M

raised
to date

\$2.7M*

distributed

*Balance will be distributed in the future to address emergent needs.



Strategic Pillars:

- Trauma Support
- Emergency Support
- Medical Support
- Financial Support
- Educational Support



The Need

All Israelis have been impacted by the war—especially victims of terror, evacuees, hostage families, families of lone soldiers, IDF soldiers, and reservists. Federation works with local organizations who are set up to deliver goods, dollars, and services to those who need them most. Organizations requesting funding undergo a rigorous vetting process led by professionals and community leaders before allocations are finalized. The scope of needs are tremendous and ever-changing, but Federation is designed to continuously assess and meet the changing reality.

“ We are all experiencing immense fear and trauma. Our support from Federation feels like a giant hug – and everyone needs a hug from time to time. I’m so grateful. ”

Ravit Steinmetz-Shemla

Director, Jewish Federation of Northern New Jersey, Israel Office



Trauma Support

Funding is given to trusted partners on the ground that provide therapeutic support to those hardest hit by the effects of the war: evacuees, children, families of the hostages, Holocaust survivors, first responders, and soldiers coming off the front lines.



Partners: Israel Trauma Coalition; Jewish Agency for Israel; Koby Mandell Foundation; World ORT; Eli Israel Association; Amcha; City of Ofakim

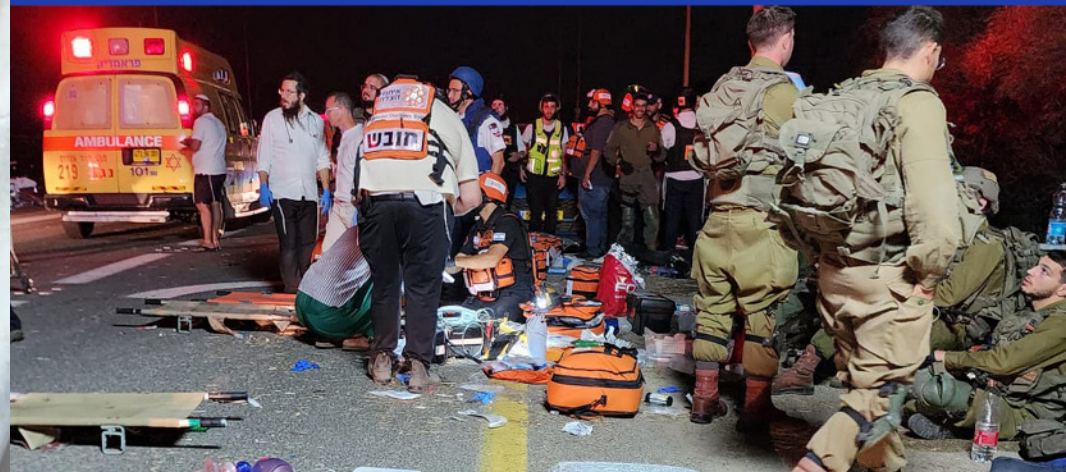




Emergency Support

Funding is sent for supplies and training for an emergency response team in Nahariya, northern New Jersey's sister city that borders Lebanon and faces imminent threats from Hezbollah. The emergency response team is prepared to defend the town 24/7 in the face of an attack until the IDF is able to respond.

Partner: City of Nahariya



Medical Support

Funding is used to purchase supplies and equipment for first responders and hospitals close to the front lines.

Partners: Galilee Medical Center; Sheba Medical Center; Soroka Medical Center; United Hatzalah; Magen David Adom; ZAKA Search and Rescue



Financial Support

Funding is provided to bridge the economic uncertainties created by the war. Funding will provide immediate, critical financial aid to victims and their families. These programs provide interest-free loans to individuals and businesses.

Partners: Jewish Agency for Israel; Ogen



Educational Support

Funding is dedicated to providing informal learning opportunities for children evacuated from Netiv HaAsara to offset daily disruptions in formal schooling due to the war. Funds also provide after school supplemental programs to students in Nahariya; programming is targeted to students in grades 1 and 2 (reading and writing) and for grades 11 and 12 (matriculation exam preparation) to ensure they don't fall behind.

Partners: Rashi Foundation; City of Nahariya

What's Next?

Community Resilience & Rebuilding

In the months and years ahead, our work will help enable thousands of people to return to their homes and rebuild their communities. Jewish Federation aims to bolster societal resilience ensuring that, despite the events of October 7, we will make possible the growth and potential of the Israeli people. Our efforts will ensure the rebuilding and strengthening of Israeli society. *Am Yisrael Chai!*

עם ישראל חי!



תודה רבה!

Thank you for making
a world of difference.

In this traumatic moment for the Jewish people, you have made an enormous difference. The unprecedented giving of the Jewish community will make a truly significant difference in so many lives. Hundreds of organizations have been empowered to make a difference in the trajectory of Israel's ability to respond to mental health, medical, communal, and economic needs as this crisis continues.

We are in awe of the impact we are having together, and we thank you.

JEWISH FEDERATION OF
NORTHERN NEW JERSEY





50 Eisenhower Drive
Paramus, New Jersey
201-820-3900
jfnnj.org



Jewish Federation
of Northern New Jersey