

# IMPACT REPORT

## 2024



**Jewish Federation**  
of Northern New Jersey

The background features several thin, light blue lines that intersect to form a series of overlapping triangles and polygons, creating a dynamic, geometric pattern.

**A YEAR  
OF PURPOSE,  
PREPAREDNESS,  
& HOPE**

# 2024

Federation creates lasting impact by strengthening and uplifting our entire community—every day, not just in times of need.

## **THAT'S THE STRENGTH OF FEDERATION**

We are a force for connection and action, bringing people together when it matters most. This year, we mobilized resources, fortified security, fought antisemitism, and stood in unwavering solidarity with Israel. We gathered thousands of community members for an October 7 commemoration, expanded programs for families, and cared for our most vulnerable.

Through it all, hope has guided us. Because of you—our donors, volunteers, and partners—we move forward with purpose.



# A MESSAGE FROM **DANIEL C. HERZ** & **JASON M. SHAMES**

Dear Friends,

**Helping is important. But making a lasting impact is what drives us.**

**This year, Federation didn't just respond, WE LED.**

We stood up for Israel when it mattered most—rallying our community, advocating for its

security, and ensuring that those in crisis had the support they needed. We took action against rising antisemitism, strengthening security for our schools and synagogues, and making sure our voices were heard by elected officials. We invested in the well-being of our Jewish community, expanding mental health support, fostering Jewish identity, and caring for the most vulnerable among us.

**WE SEE THE BIG PICTURE.** When our community needed support, we reached farther. When challenges arose, we acted faster. When the moment called for leadership, we thought bigger.

This work is only possible because of your generosity, passion, and belief in the power of collective action. Together, we are not just addressing today's challenges—we are shaping the Jewish future.

The year ahead will bring both challenges and opportunities—to build, protect, and inspire. With your partnership, we will continue creating lasting change.

Thank you for standing with us, for believing in what we can accomplish together, and for making this work possible.

**Daniel C. Herz**  
President

**Jason M. Shames**  
Chief Executive Officer



“ This year,  
Federation didn't  
just respond,  
WE LED. ”



# ISRAEL

THIS PAST YEAR WAS ONE OF THE MOST CHALLENGING IN ISRAEL'S HISTORY.

The attacks of October 7, 2023 left thousands grieving, communities uprooted, and Israel in a prolonged state of war, with many hostages still in captivity. In response, Jewish Federation immediately mobilized, securing millions for emergency aid, trauma relief, and infrastructure support, including funding 13 bomb shelters in our sister city of Nahariya. On the anniversary of the attacks, along with partner organizations, Federation brought together thousands in our community to honor the victims, stand with Israel, and reaffirm our unwavering commitment to **bring them home**.

At Federation, **#BringThemHome** reflects our deepest values — hope, unity, and a relentless commitment to action.

## AREAS OF IMPACT IN ISRAEL



TRAUMA  
SUPPORT



EDUCATIONAL  
SUPPORT



EMERGENCY  
RESPONSE



SHELTERS





# Nahariya, ISRAEL

Nahariya, our sister city, is a beautiful coastal town in northern Israel, just six miles from the Lebanon border. When Hezbollah attacks forced the city into lockdown, families were left without enough safe spaces to shelter from rockets and shrapnel. Federation took action, securing **\$1.3 million to build 13 new bomb shelters.** We also provided computers, books, and educational support—because when our extended family is in danger, we are prepared to help. Our bond with Nahariya runs deep, built over years of partnership, shared values, and a profound sense of responsibility. Even from 6,000 miles away, we stand together. But our connection isn't only in moments of hardship. This past spring, we were honored to celebrate Nahariya's 90<sup>th</sup> birthday, a milestone for a resilient city we are proud to call family.



**JEWISH FEDERATION SECURED FUNDING FOR 13 NEW BOMB SHELTERS**







# Our Sister City



**JASON M. SHAMES &  
NAHARIYA, MAYOR, RONEN MARELY**



**JERSEY GARDEN: A LIVING TRIBUTE TO THE BOND BETWEEN  
JEWISH FEDERATION AND NAHARIYA**

# JEWISH COMMUNITY CAMPAIGN

Federation's Jewish Community Campaign is our community's lifeline—fueling critical programs and services that make an impact locally and globally.

Your donations inspire action — action that means we stand up to antisemitism, advocate for Israel, build Jewish identity, and support and care for the most vulnerable. Together we create connections, amplify our voices, and turn shared values into real change.

Every gift, every effort, builds a stronger, more vibrant Jewish future.

# WHAT WE DO: THE JEWISH COMMUNITY CAMPAIGN FOUR PILLARS



**COMBAT  
ANTISEMITISM  
& SECURE OUR  
COMMUNITY**



**ADVOCATE FOR  
& SUPPORT  
ISRAEL**



**CARE  
FOR  
OTHERS**



**STRENGTHEN  
JEWISH  
IDENTITY**



# JEWISH COMMUNITY CAMPAIGN

## Combat Antisemitism & Secure the Community

**THE THREAT OF ANTISEMITISM REMAINS PERVASIVE.**

**OUR WORK MEETS THE CHALLENGE OF ANTISEMITISM HEAD-ON  
THROUGH ACTION, ADVOCACY, AND EDUCATION.**

**THAT'S THE STRENGTH OF FEDERATION.**

From securing schools and synagogues to partnering with law enforcement and advocating for stronger security measures, we are on the front lines. We fight for legislation that strengthens hate crime laws, ensures security funding, and holds institutions accountable. We provide training so individuals, schools, and community organizations know how to recognize and respond to threats.

On college campuses and in public schools, we work with administrators and students to identify and combat antisemitic incidents, and provide resources to educate staff and students.



STOP  
ANTISEMITISM

# JEWISH COMMUNITY CAMPAIGN

## Advocate for & Support Israel

**ISRAEL WILL ALWAYS BE A TOP PRIORITY.**

**ADVOCATING FOR ITS SECURITY, HELPING BUILD RESILIENCE, AND  
CARING FOR OUR ISRAELI BROTHERS AND SISTERS IS CORE TO OUR MISSION.**

**THAT'S THE STRENGTH OF FEDERATION.**

We are a living, breathing force for unity, strengthening the ties between our community and Israel. Powered by our shared commitment, we create change that goes beyond donations—it's about building a resilient, connected future together, where advocacy and support for Israel strengthen our bond and shape a better tomorrow.





# JEWISH COMMUNITY CAMPAIGN

## Strengthen Jewish Identity

**BUILDING JEWISH IDENTITY IS VITAL.**

**THROUGH PROGRAMS, EDUCATION, AND EXPERIENCES,**

**WE CONNECT INDIVIDUALS TO JEWISH TRADITIONS AND COMMUNITY.**

**THAT'S THE STRENGTH OF FEDERATION.**

We foster growth and connection by providing resources, experiences, and a supportive community for everyone — from tots to teens, young adults to seniors — across all denominations and throughout Bergen, Passaic, and Hudson counties.







# JEWISH COMMUNITY CAMPAIGN

## Care for Others

**CARING FOR OTHERS IS A CORE JEWISH VALUE AND A FEDERATION PRIORITY.**

**WE OFFER COMPASSION AND DIGNITY TO THOSE IN NEED**

**THROUGH VITAL SUPPORT, OUTREACH, AND PROGRAMS.**

**THAT'S THE STRENGTH OF FEDERATION.**

From seniors facing isolation to families struggling with food insecurity, from young people in need of mental health support to individuals navigating life's challenges, we are there.

Through critical services, compassionate outreach, and unwavering support, we provide dignity, stability, and hope—because caring isn't just what we do, it's who we are.





EVAPORATED MILK

8 TRAYS/LAYER - 12 LAYER  
96 CS/LOAD - STACK 2 PALLETS

# THE POWER OF LEGACY GIVING

## Because They Cared for Us: We Care For Them

Endowment gifts ensure that essential programs can grow and thrive, enriching the lives of so many in our community—today and for generations to come.

Thanks to the generous forethought of Joseph and Josephine Sanders, z”l, and Lynne & Richard Dresel, z”l, the endowment funds they created with Jewish Federation generated \$50,000 to support Jewish senior programming through the NORC\* Initiative at the Kaplen JCC on the Palisades. This vital program brings weekly exercise classes, engaging lectures, entertainment, and social activities directly to seniors where they live—helping them stay active, connected, and engaged.

**In just one year, this program has grown from serving 251 seniors in five buildings to reaching 760 seniors across ten buildings in Hackensack, Fort Lee, and Cliffside Park. This expansion means more older adults can enjoy a vibrant, supportive community right at home.**

*Federation’s endowments include unrestricted and specific purpose funds, as well as endowments that will sustain our Jewish Community Campaign. Whether the gift is made today or promised through one’s estate, endowment gifts reflect a lasting commitment to Jewish life.*

*(\*NORC: Naturally Occurring Retirement Community)*







MAJOR GIFTS DINNER



FEDERATION FULL HOUSE



LION OF JUDAH LUNCHEON



MITZVAH DAY



ANNUAL MEETING

## A YEAR IN PICTURES



SINAI SCHOOLS

MAJOR GIFTS DINNER



KING DAVID SOCIETY



SUPPLIES FOR SUCCESS



PLAY WITH PURPOSE





**MARCH MEGA FOOD DRIVE**



**FEDERATION FULL HOUSE**



**PLAY FOR FEDERATION**



**KING DAVID SOCIETY**



**FEDERATION FULL HOUSE**

**WOMEN'S SPRING LUNCHEON**



**2024**



**VISIONARY VOICES**

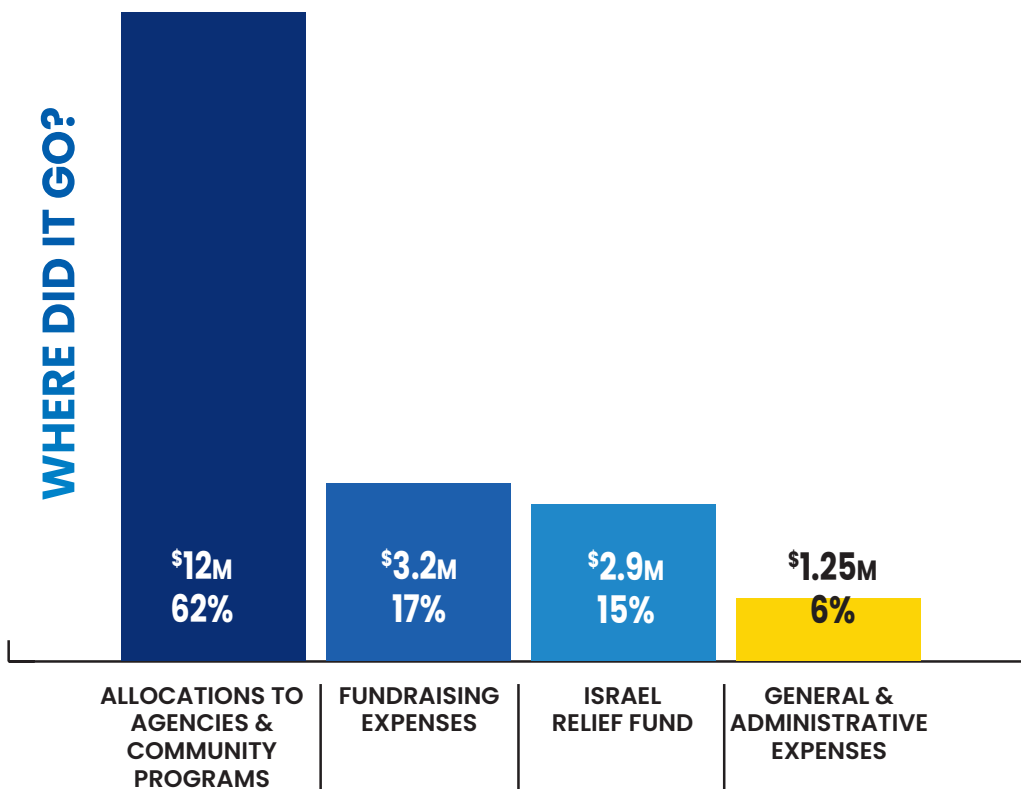
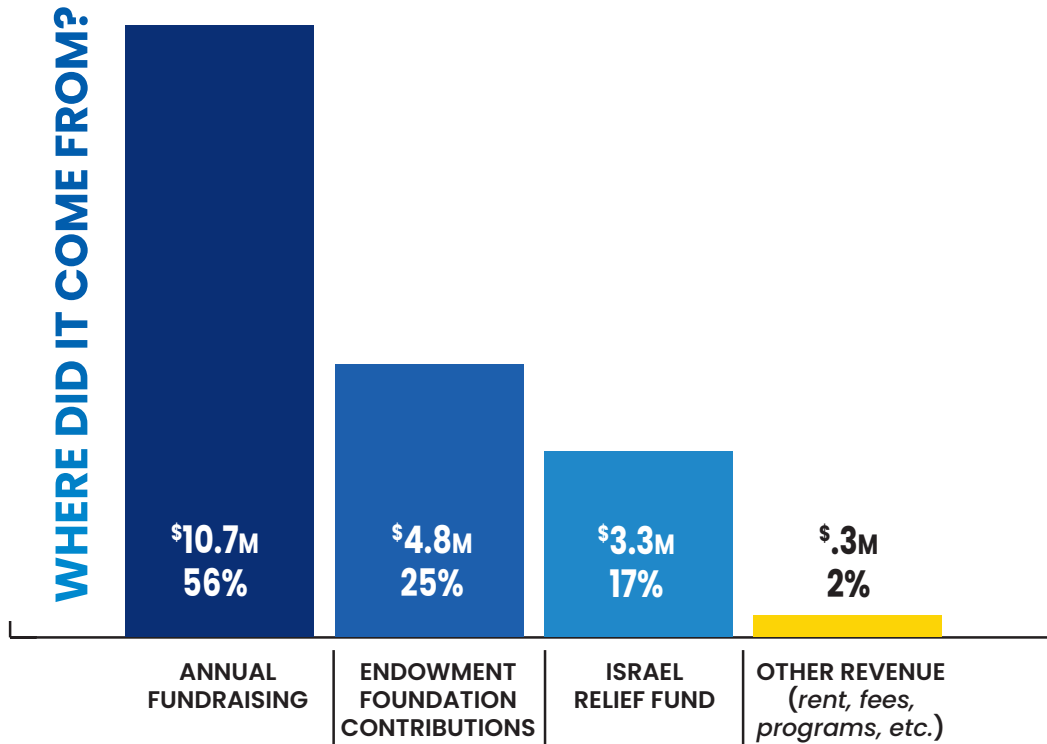


**SUPER SUNDAY**



# FY 2023–24 FINANCIAL SNAPSHOT

## \$19.1 MILLION RAISED

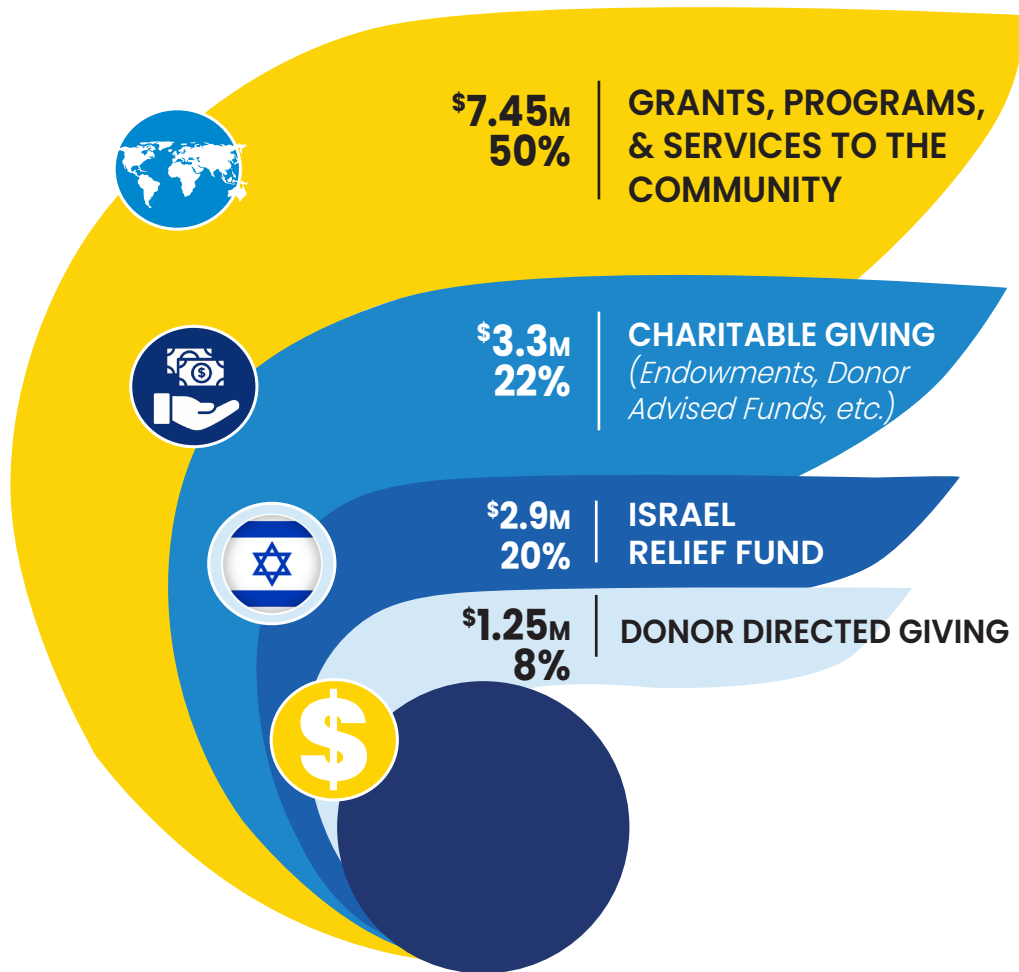


**NOTES:** Derived from Jewish Federation of Northern New Jersey's audited financial statements, fiscal year ending June 30, 2024. **Does not include unrealized investment gains or changes in net assets.** According to Charity Watch, a "highly efficient" charity produces a program percentage of 75% or greater ([www.charitywatch.org](http://www.charitywatch.org)).

Our budgeting process is based on the calendar year community campaign, but the audited financials are based on the fiscal year (ending June 30). This timing nuance contributes to any variances between revenue and expenses.

# BREAKDOWN OF ALLOCATIONS TO AGENCIES & COMMUNITY PROGRAMS

## \$14.9 MILLION DISTRIBUTED



### GRANTS, PROGRAMS, & SERVICES TO THE COMMUNITY

Federation distributes operating and programming grants locally and in Israel. Targeted program grants are directed to seven areas of impact:

- Hunger Relief
- Building Jewish Identity in our Youth
- At-Risk Youth in Israel
- Jewish Engagement for Special Needs
- Jewish Day Schools
- Mental Health Support for Young People
- Special Programs

Federation provides programs and services for the community including:

- Community Security
- Jewish Community Relations
- Center for Israel Engagement
- Civic & Community Engagement
- Volunteer Center
- Synagogue Leadership Initiative
- Kehillah Cooperative Group Purchasing
- Jewish Community Outreach in Hudson County & Wayne

### CHARITABLE GIVING (Endowments, Donor Advised Funds, etc.)

Donations to Federation or other eligible non-profits made through endowments or donor advised funds at Federation.

### ISRAEL RELIEF FUND

Donations to the Israel Relief Fund provided mental health and trauma support, economic revitalization, educational resources, and emergency response supplies.

### DONOR DIRECTED GIVING

Designated donations made through Federation to other agencies aligned with Federation's mission.



# OUR COMMUNITY

## LOCAL PARTNER AGENCIES

BBYO/BBYO International	The Moriah School
Beit Midrash Teaneck	Naaleh High School for Girls
Ben Porat Yosef	Network of Jewish Human Service Agencies
Birthright Israel	OpenDor Media
Camp Veritans	Rosenbaum Yeshiva of North Jersey
COJECO (Russian Speaking Outreach/Teen Program)	Rutgers Hillel
The Frisch School	SINAI Schools
Hebrew Free Loan of New Jersey	Solomon Schechter Day School of Bergen County
Hillel International	Teach NJ Advocacy Initiative
JCC of Northern New Jersey	Temple Avodat Sholom/Kol Dorot (Individual Learning)
Jewish Association for Developmental Disabilities (J-ADD)	Temple Emanuel of Pascack Valley (CHAI Program)
Jewish Community Center Association (JCCA)	Torah Academy of Bergen County
Jewish Family and Children's Services of Northern New Jersey	Tzofim (Tenafly & Fair Lawn)
Jewish Federations of New Jersey	United Synagogue of Hoboken (PJ Library, Special Needs Program)
Jewish Federations of North America	Wayne Jewish Programming
Jewish Home Family	Yachad
Jewish Student Union Clubs	Yavneh Academy
Kaplen JCC on the Palisades	Yeshivat He'Atid
Ma'ayanot Yeshivah High School for Girls	Yeshivat Noam
Moishe Houses	

---

## OVERSEAS PARTNER AGENCIES

Amcha – Holocaust Survivor Rehab	Natan
Bayit Cham for Boys & Girls	Netiv HaAsara
Eli Association	General Support & Student Visit
HaGal Sheli	Nirim (At-Risk Youth)
Israel Trauma Coalition	Ogen Financial
Jewish Agency For Israel (JAFI)	The Relief Center (Nahariya)
JFNA Ethiopia Aliyah Fund	The Society for Protection of Nature in Israel (SPNI)
Joint Distribution Committee (JDC)	Tikvah Children's Home
Koby Mandell Foundation	Western Galilee Hospital
LEKET Israel – The National Food Bank	
Nahariya	

---

## COMMUNITY PROGRAMS

Chaplaincy – Bergen County	Jewish Community Security Department
Center for Israel Engagement	Jewish Right Start
Community Group Purchasing (Kehillah Cooperative)	(Preschool Incentive Grants)
Hillel of Northern New Jersey	One Happy Camper
LEAP High School	Onward Israel
Jewish Leadership Program	Partnership (with Nahariya)
IsraelNOW 8 <sup>th</sup> Grade Trip to Israel	PJ Library
Jewish Community Relations Committee	Synagogue Leadership Initiative
	Volunteer Center

# BOARD & LEADERSHIP

**Daniel Herz**  
President

**Andrew Kent**  
Vice President,  
Financial Resource  
Development

**Andrea Weinberger**  
Vice President,  
Planning & Allocations

**Jeffrey Tucker**  
Vice President, Treasurer

**Donna Weintraub**  
Vice President,  
At Large

**Marcy Cohen**  
Secretary

**Daniel M. Shlufman**  
Immediate Past President

**Jason M. Shames**  
Chief Executive Officer,  
Executive Vice President

Board of Trustees

**Roberta Abrams\***

**Lauri Bader**

**Dina Bassen**

**Bruce Brafman**

**Paul Brensilber**

**Lauren Cherkas**

**Stephanie Cohn**

**Ruth Cole**

**Robin Epstein**

**Shira Feuerstein**

**Merle Fish**

**Casey Halper**

**Joelle Halperin**

**Andrew Jacobs**

**Marni Kriegel, MD**

**Joan Krieger**

**Lee Lasher\***

**Nathan J. Lindenbaum**

**Miriam Lipsky**

**Daniel Miller**

**Susan Penn**

**Jayne Petak\***

**Lois Roman**

**Ron Rosensweig\***

**Rena Donin Schlusell**

**Evan Schwarz**

**Paula Shaiman**

**Seth Shulman**

**Larry Silverman**

**Steve Silverstein**

**Fran Weingast**

**Tracy Zur**

**\*Past President**

---

**Jason M. Shames, Chief Executive Officer**

**Amy Glazer, Chief Advancement Officer**

**Naomi S. Knopf, Chief Impact Officer**

**Andrew Epstein, Chief Financial Officer**

**Laura Freeman, Managing Director, Marketing and Communications**

**Robin Rochlin, Managing Director, Endowment Foundation, Assistant Executive Vice President**

# כולנו ביחד!

All of us together!



**Jewish Federation**  
of Northern New Jersey

[jfnnj.org](http://jfnnj.org)

50 Eisenhower Drive  
Paramus, New Jersey  
201.820.3900



@jfnnj

DONATE TODAY!

